



# CASE STUDY

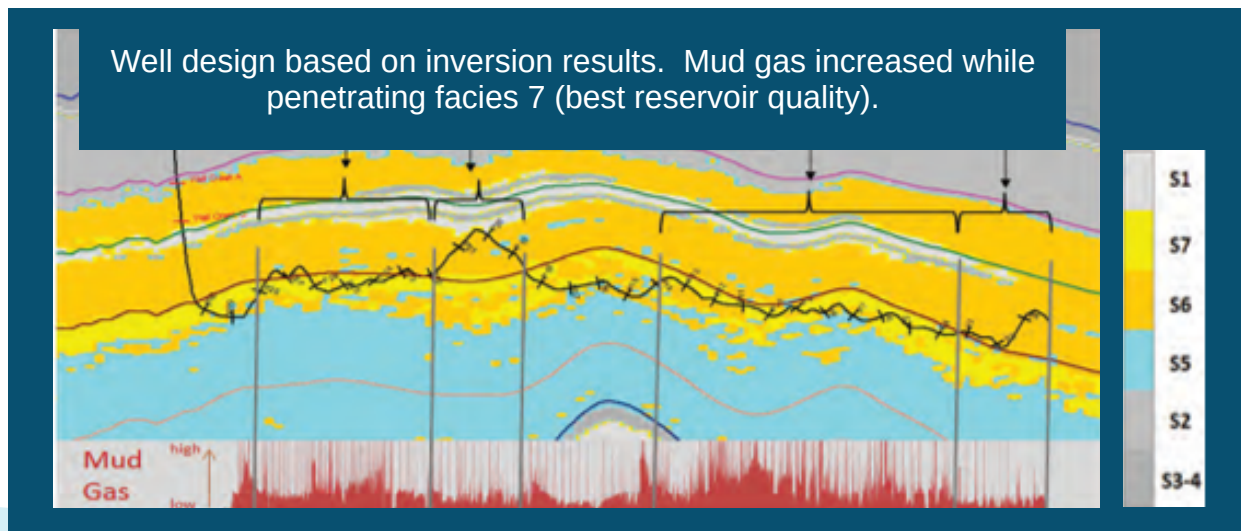
## Characterizing Unconventional Plays

### OVERVIEW

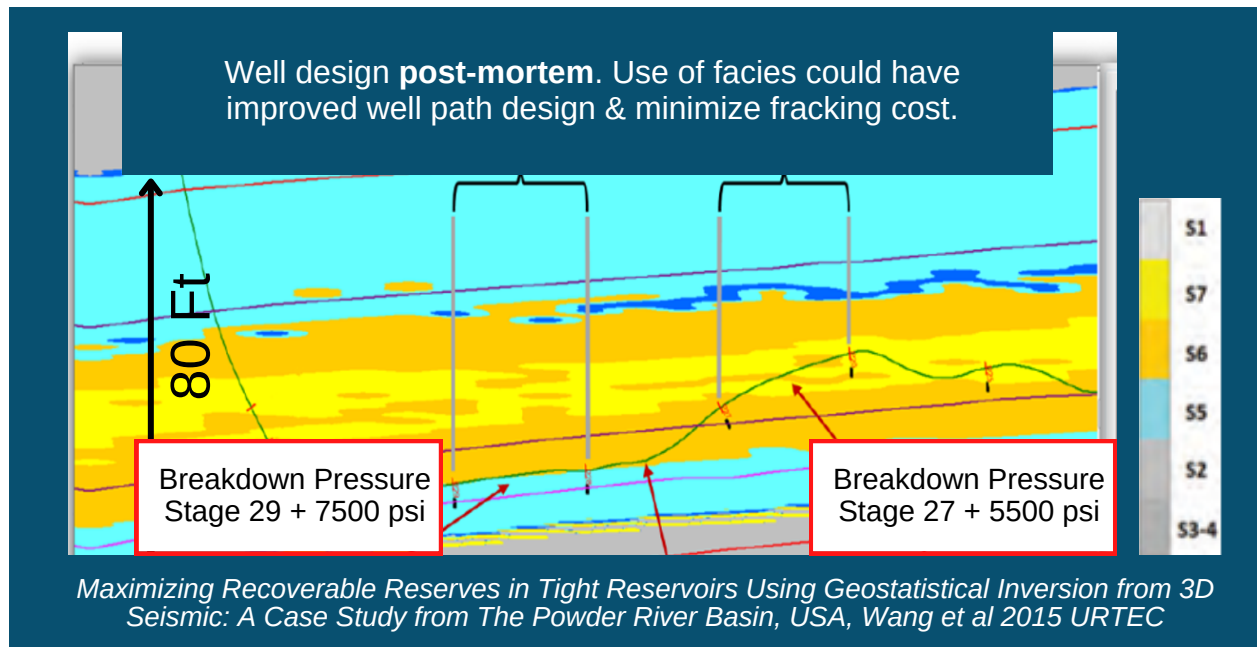
This case study takes a look at Northeast Wyoming and Southeast Montana in the Upper Cretaceous sandstone in the Powder River Basin. Sandstones at the Upper Cretaceous are stratigraphically complex in this basin. See how GeoSoftware's geostatistical inversion technology was utilized in this Unconventional play to enable the optimum identification of sweet spots and well placement.

### CHALLENGES

- Reduce economic risk and maximize recoverable reserves
- Enable more efficient and effective well placement
- Improve engineering of planning, drilling and completion of a well



# CASE STUDY



## SOLUTION

GeoSoftware #ReservoirExperts performed the following workflow:

- Rock physics modelling
- Inversion-based re-interpretation of the Earth model
- Generation of 21 realizations of Reservoir and Geomechanical properties

## RESULTS

- ✓ Frack strategically, minimize costs & maximize recovery
- ✓ An increased efficiency, reducing drilling risk, and more informed decisions in unconventional plays