

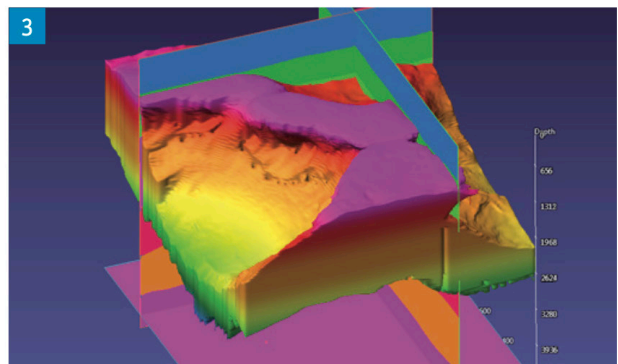
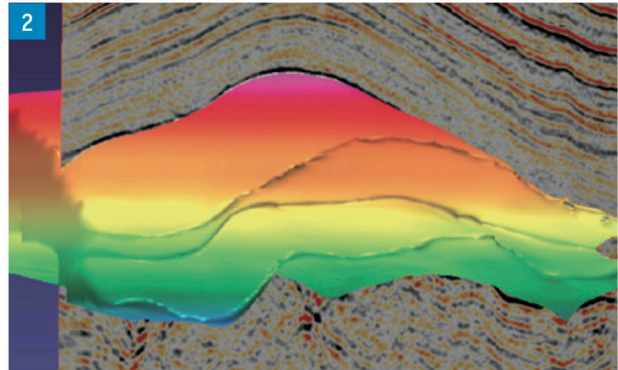
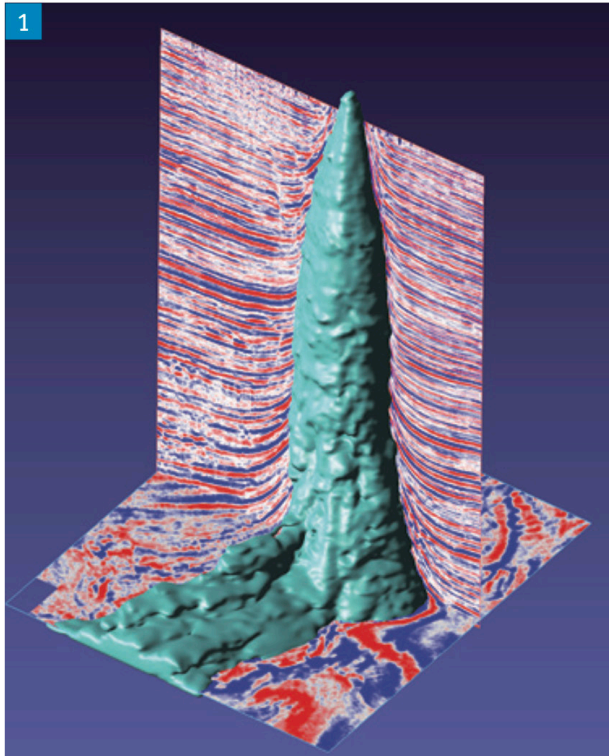
See Where the Salt Ends and the Pay Zone Begins

InsightEarth SaltSpark[™] is an innovative solution that quickly and accurately brings the most complicated structures into clear definition. A closed 3D geobody can be created even in the most poorly imaged areas for use in velocity modeling, saving exports to another modeling package. Easily separating the geobody from the hydrocarbon deposit enables highly informed drilling recommendations.

- **SaltSpark** correctly defines salt bodies, no matter how complex or unusual they may be. The salt is clearly identified to illuminate potential reservoirs
- A simple workflow clearly defines formation boundaries. Iterative migrations can thus be run much more quickly to deliver superior imaging results

The SaltSpark Advantage

- Automated processes quickly identify the boundaries of domes, pillows, massifs and other complex bodies with great precision
- Advanced Trim and Seal rapidly creates a “no light leaks” interpretation for use in geo-modeling or velocity model building
- The interpreter can choose from any number of attributes to provide stopping conditions to define boundaries of the geobody, thus eliminating line-by-line interpretation



Surface Wrapping

SaltSpark includes two powerful tools that add speed and accuracy to your interpretation workflows. Surface wrapping rapidly captures the entire salt volume within one highly precise closed triangulated surface.

Surface draping allows you to quickly define the tops and bases of a complex salt body with great accuracy. Together, these tools significantly reduce your interpretation and model building time.

SaltSpark is the only software in the industry that:

- Exploits the entire 3D volume to create a mask volume from a closed geobody
- Has the ability to extract the salt body from one volume and allow it to “grow” into the correct position in subsequent volumes
- Surface wrapping and surface draping can also be used to capture any geobody of interest including stratigraphic objects, reefs, gas chimneys, volcanic inclusions, and brittle and fractured facies

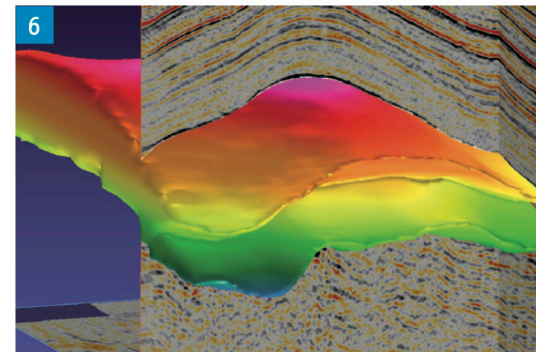
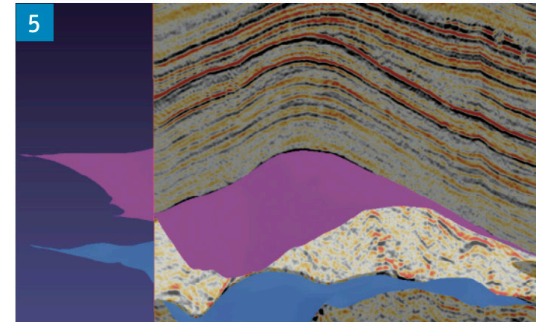
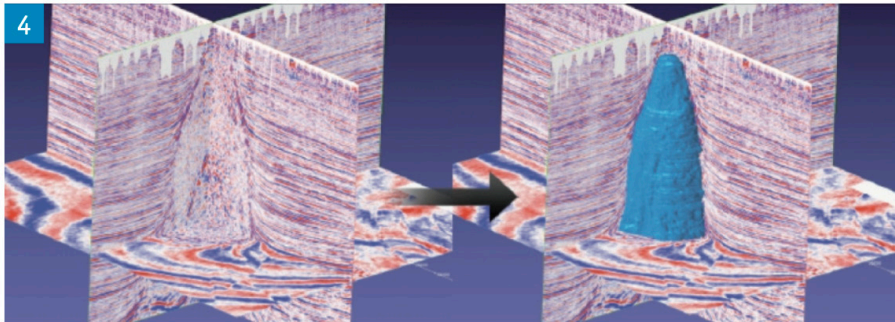


Figure 1. Domes and spires.

Figure 2. Salt pillow.

Figure 3. Massifs.

Figure 4. Surface wrapping.

Figure 5. The salt pillow has been draped top and bottom.

Figure 6. Wrapping of the salt pillow including lateral incision.

InsightEarth Technology Portfolio

At last you have the freedom to truly unleash your interpretation expertise. **InsightEarth**® eliminates traditional mundane point-and-click activities that are common with other software packages and replaces them with potent interpretation power. The **InsightEarth** suite is comprised of four powerful toolkits: **FaultFractureSpark**, **PaleoSpark**, **SaltSpark** and **WellPath**. See the salt as it truly is, and tap the reservoir beneath.